

## About the author and the diagram

This e-book is for free use for anybody who is interested in jewellery. Any materials from this e-book are not to be sold in Internet or printed out for any commercial purpose. If you have any commercial interest in this book and the diagrams, write your suggestions to the author at leta55555@hotmail.com

On another hand, the author grants the rights of using the patterns in this book to create your own beaded jewellery for commercial purposes. If you feel, that you can sell what you make using the patterns, go ahead!

Also, the author of this e-book happily grants the right to share this e-book with your friends for no charge. Get together and get creative!

## Tutorial

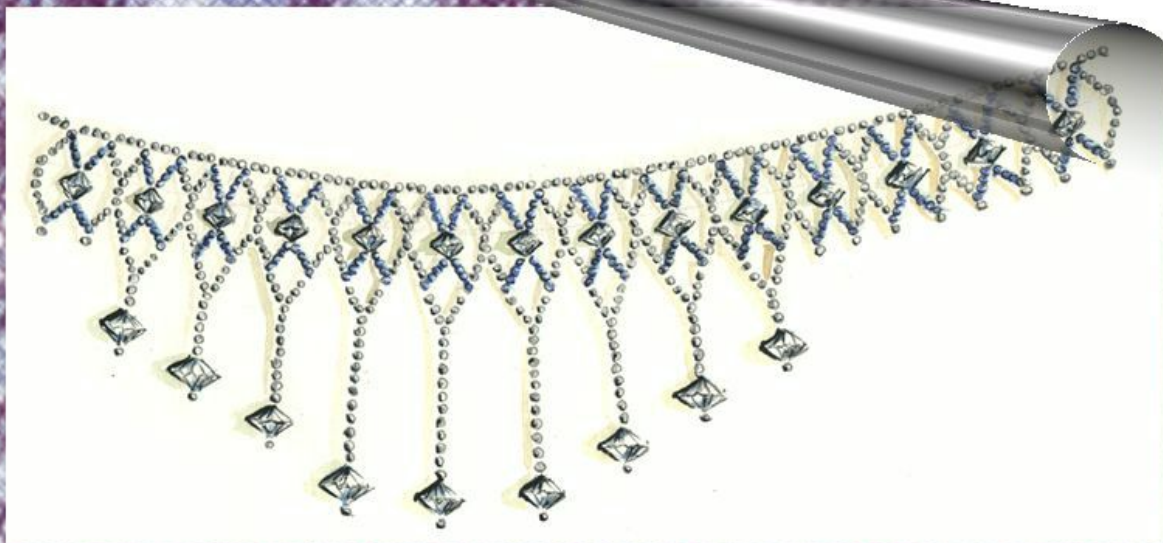
*more variations for this pattern is going to be in my yahoo group*  
<http://groups.yahoo.com/group/magicjewellerybox/>

This is the next necklace for the level 2 beginners. This diagram has to be adjusted for your crystal beads. As in my amber necklace tutorial I suggested that it was 3 beads equal the length of the holes of the crystal beads. However, you need to check if this is true for your crystal beads. You can take 3, 4 or 5 mm crystals and adjust the pattern for them (or just find out what size of a crystal or a stone bead has a hole equal to the length of your 3 seed beads).

---

<http://nataliakhon.com>  
[leta55555@hotmail.com](mailto:leta55555@hotmail.com)

Can a symbol have different meanings in different parts of the world?  
Can a symbol have different meanings for different people?  
Can a symbol have different meanings for different people?  
Can a symbol have different meanings for different people?



Symbols have different meanings in different parts of the world, generally determined by the culture and geography of a nation or region. This means that the same symbol can have different meanings to people from different parts of the world.

Can a symbol have different meanings in different parts of the world?  
Can a symbol have different meanings for different people?  
Can a symbol have different meanings for different people?  
Can a symbol have different meanings for different people?



In the past, centuries ago, people believed that it was magic. They carried amulets and talismans with them.